

HORIZON<sup>®</sup>

A LIMS for Life

# HORIZON<sup>®</sup>

**Unraveling the Mystery of SaaS, PaaS or  
On-Premise LIMS Selections**

# All work! What works for you?

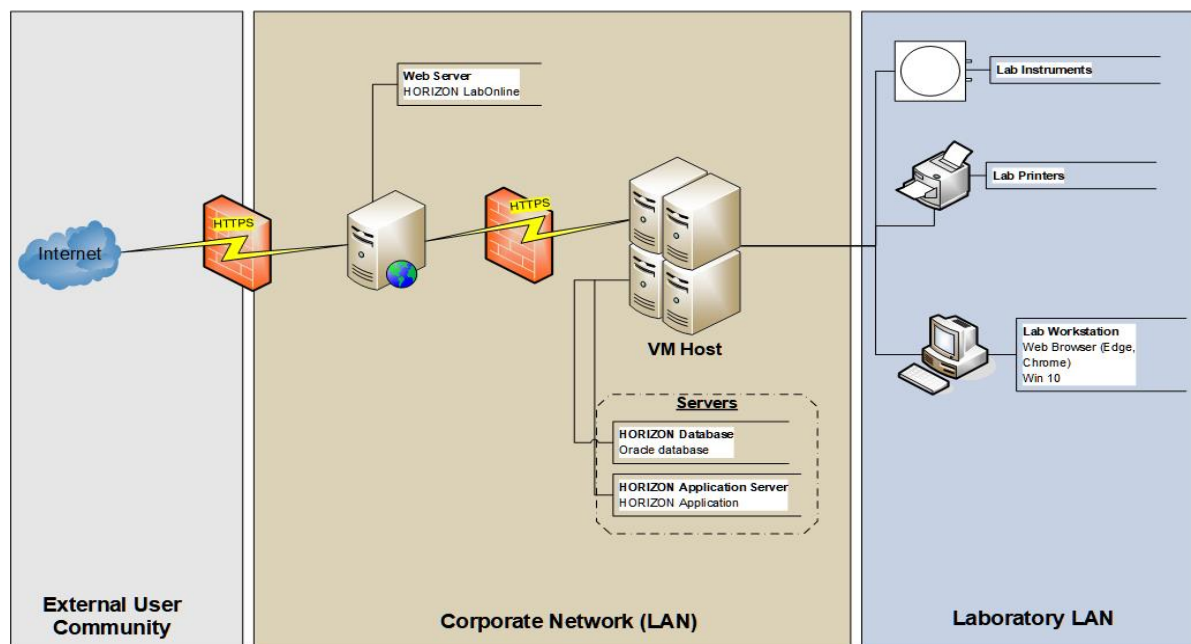
## Infrastructure questions:

1. Personal &/or Professional preference or requirements
2. Internal IT infrastructure
3. Internal IT staff
4. LIMS admin staff and capabilities

HORIZON<sup>®</sup>

# Typical On-Premise LIMS Topology

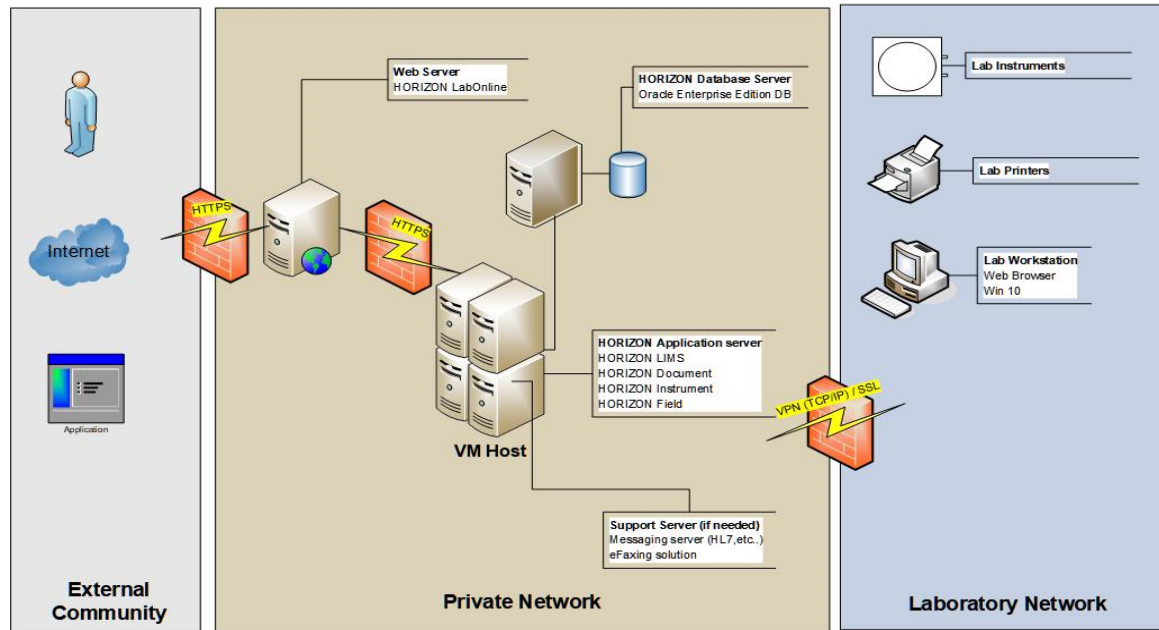
HORIZON® LIMS Computing Topology



HORIZON®

# HORIZON LIMS Cloud Topology

## HORIZON<sup>®</sup> LIMS Cloud Topology



HORIZON<sup>®</sup>

## Solutions Defined

**On-Premise** – the laboratory owns and operates its own server(s); services and access to server(s) controlled by the laboratory and owns licenses in perpetuity.

**Cloud** – A hosted LIMS solution where the LIMS is accessed through secure private internet and resides on servers outside of the laboratory. Generally presented as a PaaS or SaaS solution.

HORIZON<sup>®</sup>

## PaaS versus SaaS

**PaaS** – Platform as a Service; vendor host the LIMS, but the laboratory maintains and updates the application and generally owns licenses in perpetuity.

**SaaS** – Software as a Service; vendor manages the application and host the LIMS servers for the laboratory with term/leased licenses.

Variations and combinations are also possible.

HORIZON<sup>®</sup>

## On-Premise

Client maintains and updates database and LIMS

Client owns the licenses in perpetuity

Client controls data security, availability and backups

LIMS provider, if needed, is typically given limited access to the LIMS at specified times; All else done by LIMS Administrator

HORIZON®



## Platform as a Service (PaaS)

LIMS Vendor maintains and updates database and LIMS application

Client owns the licenses in perpetuity

LIMS vendor/hosting agent handles data security  
-Client leases server space (Cloud Computing)

LIMS provider, if needed, is given access to the LIMS;  
All else done by LIMS Administrator

HORIZON®

# Software as a Service

LIMS vendor maintains and updates database and LIMS

Client licenses are term licenses

LIMS vendor and hosting agent handles data security  
-Client leases server space (Cloud Computing)

LIMS provider plays role of LIMS Administrator; Limited  
(if any) direct need for laboratory to do so.

HORIZON<sup>®</sup>

# Benefits

## On-Premise

1. You own the database and the LIMS
2. All data is in-house

## PaaS

1. You own the LIMS
2. Benefits of IT support by service provider

## SaaS

1. Built in LIMS Admin and IT support
2. Turn-key solution

HORIZON<sup>®</sup>

# Drawbacks

## On-Premise

1. You own the database and the LIMS (You are responsible for it!)
2. All data is in-house (Backups? Where? Accessibility?)
3. LIMS Admin staff & IT staffing requirements

## PaaS

1. LIMS Admin staffing requirements

## SaaS

1. Cost

HORIZON®

## Which one? Questions to ask:

Are you allowed to use a hosted solution, or will you be? The acceptance rate of cloud solutions is constantly rising.

Does the LIMS vendor allow you to roll from one type of agreement to another? Things change.

What key aspects from the LIMS vendor and/or hosting company should you look for? Security. Hosted where?

HORIZON®

## All Solutions Are Valid!

Any of the solutions offered work. What matters is, what solution works best for your situation?

Ask questions. Be direct. Compare apples to apples. Understand all cost involved. This is good for both the vendor and the lab!

HORIZON<sup>®</sup>

# Thank you!

## Any questions?

Chris Couch

HORIZON Lab Solutions

(919)896-7740

[ccouch@Horizonlims.com](mailto:ccouch@Horizonlims.com)

HORIZON<sup>®</sup>