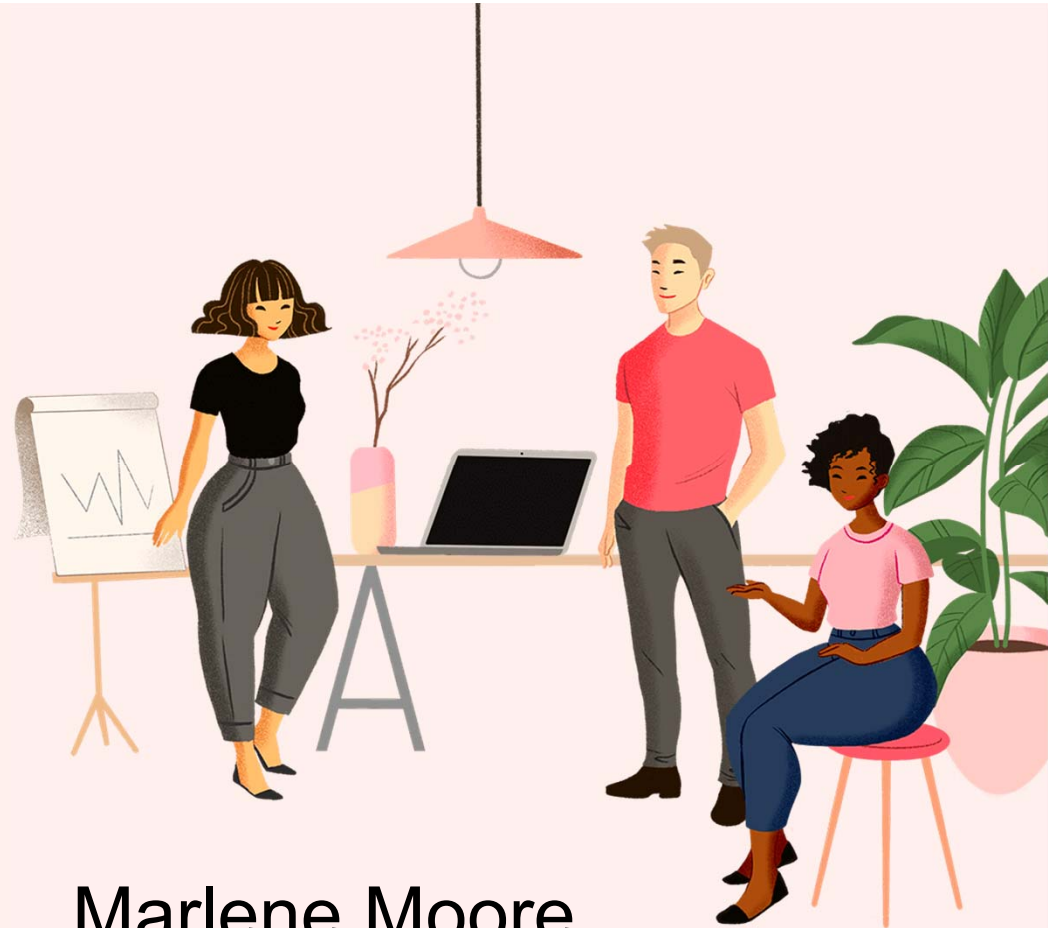


Laboratory Sampling – Part of Accreditation



Marlene Moore
Advanced Systems, Inc.

ISO/IEC 17025:2017

- ✓ Sampling, Testing, Calibration
- ✓ Demonstration of Competency
 - ✓ Accreditation
- ✓ Data of known and documented quality



Accreditation Bodies

- ✓ Now review sampling
- ✓ Scope of Accreditation
 - TNI NGABs
 - NELAP does not include sampling at this time
 - NELAP and NEFAP reviewing ISO/IEC 17025:2017



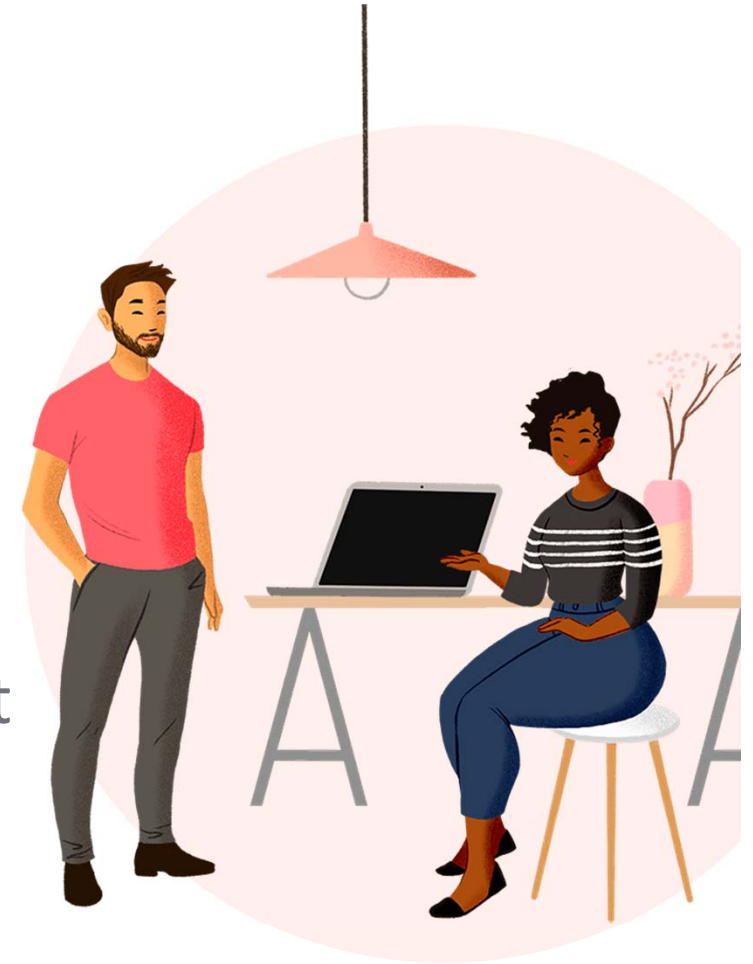
TNI NELAP and NEFAP

- ✓ NELAP

- Accredits by location

- ✓ NEFAP

- Accredits the management system and its operations



Scope of Accreditation

- ✓ TNI NELAP – *Under Development*
 - Not required by regulation
- ✓ TNI NEFAP – *Under Development*
 - Voluntary
- ✓ NGAB - Third party accreditors
 - Sample methods on the certificates



Environmental Programs

- ✓ Laboratories not always performing sample collection
- ✓ Sampling followed by testing or calibration is not included in accreditation (e.g.; statistical sampling)



Elements

- ✓ Sampling Design
- ✓ Sample Collection
- ✓ Sampling Method
- ✓ Field, lab or both



Sample Collection

- ✓ The sampling method addresses the factors to ensure the validity
 - Requires SOP based on sampling method
- ✓ The largest contributor to variability and sources of improper practices is during the sampling process.



Sampling Records

- ✓ a) reference to the sampling method used;
- ✓ b) date and time of sampling;
- ✓ c) data to identify and describe the sample (e.g. number, amount, name);
- ✓ d) identification of the personnel performing sampling;



Sampling Records

- ✓ e) identification of the equipment used;
- ✓ f) environmental or transport conditions;
- ✓ g) diagrams or other equivalent means to identify the sampling location;
- ✓ h) changes from the sampling method and sampling plan.



Testing Only

The laboratory management must address the requirements for sampling if it is part of the lab's activities

Accreditation may only relate to the testing and not to the sample collection



Traditional

Drinking water, wastewater and waste testing laboratories do not always include sample collection in the scope of accreditation.

The drinking water certification program does not require certification for sample collection.



Summary

If sampling is an activity of the laboratory, management must have:

- ✓ sampling plan identifying the statistical method when applicable ,
- ✓ sample collection method,
- ✓ records to demonstrate implementation

Thanks!

Any questions?

You can find me at:

✓ mmoore@advancedsys.com

