

## AutoTrace 280 PFAS Solid Phase Extraction Instrument



- Automates SPE for the preparation of PFAS in water samples
- Fits into any LC-MS work-flow for PFAS analysis
- Tested with US EPA Method 537.1 and EPA Method 533
- Reduces risk and sources of PFAS background in your method
- Improves laboratory efficiency

Time and freedom to tackle other challenges

# Thermo Scientific Dionex AutoTrace 280 PFAS Instrument

- Reduction of PFAS background
  - Tubing and valves and not Teflon based
  - Less manual interaction results in fewer sources of background
- SPE automation benefits
  - Minimal user interaction required
  - Improves reproducibility and recoveries
  - Precise control of flow rates improves consistency
  - Improved analytical precision and reproducibility
- Parallel sample processing steps
- Ability to load up to 4 L
  - Can achieve lower detection limits in non-targeted applications

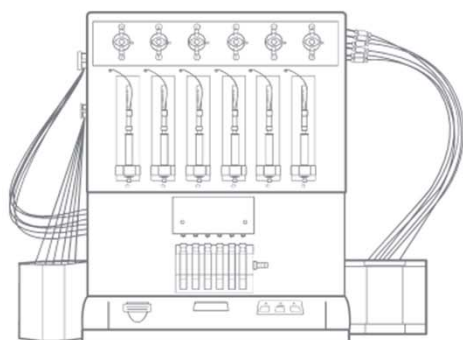


# PFAS Analysis Workflow

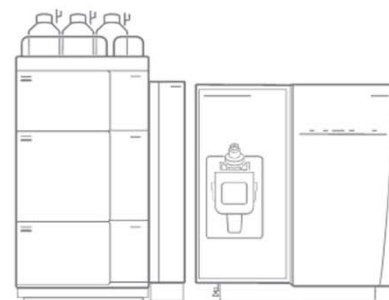
Sample collection,  
processing

Sample extraction  
and clean up

Analysis



AutoTrace 280 PFAS  
Automated SPE Instrument



Thermo Scientific™ Vanquish™ UHPLC System and  
Thermo Scientific™ TSQ Fortis™ Triple Quadrupole  
mass spectrometer

Targeted Analysis:  
For methods such as  
EPA 537.1 or EPA 533



Thermo Scientific™ Q Exactive™ Hybrid Quadrupole  
Orbitrap mass spectrometer and Thermo Scientific  
Vanquish UHPLC System

Unknown Screening:  
For discovery methods or  
non-targeted analysis