



# An Introduction to SCRIBE and How the Environmental Response Team Maximizes the Use of This Software at Superfund Sites

Chris Gallo

[gallo.christopher@epa.gov](mailto:gallo.christopher@epa.gov)

Environmental Response Team

ERT Software Support

1-800-999-6990



# Goals

---

- Translate field work into electronic data
- Facilitate data capture and input
- Use the data to make reports



# Planning Phase

---

- Data Stream Analysis
- Evaluate Data Capture Tools
- Define Data Elements
- Data Quality Objectives

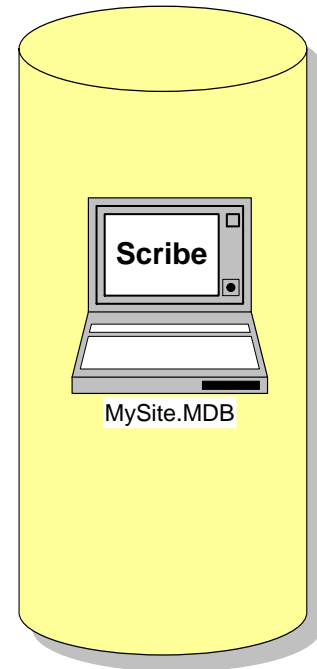


# On-site information workflow can range from the Simple...

---

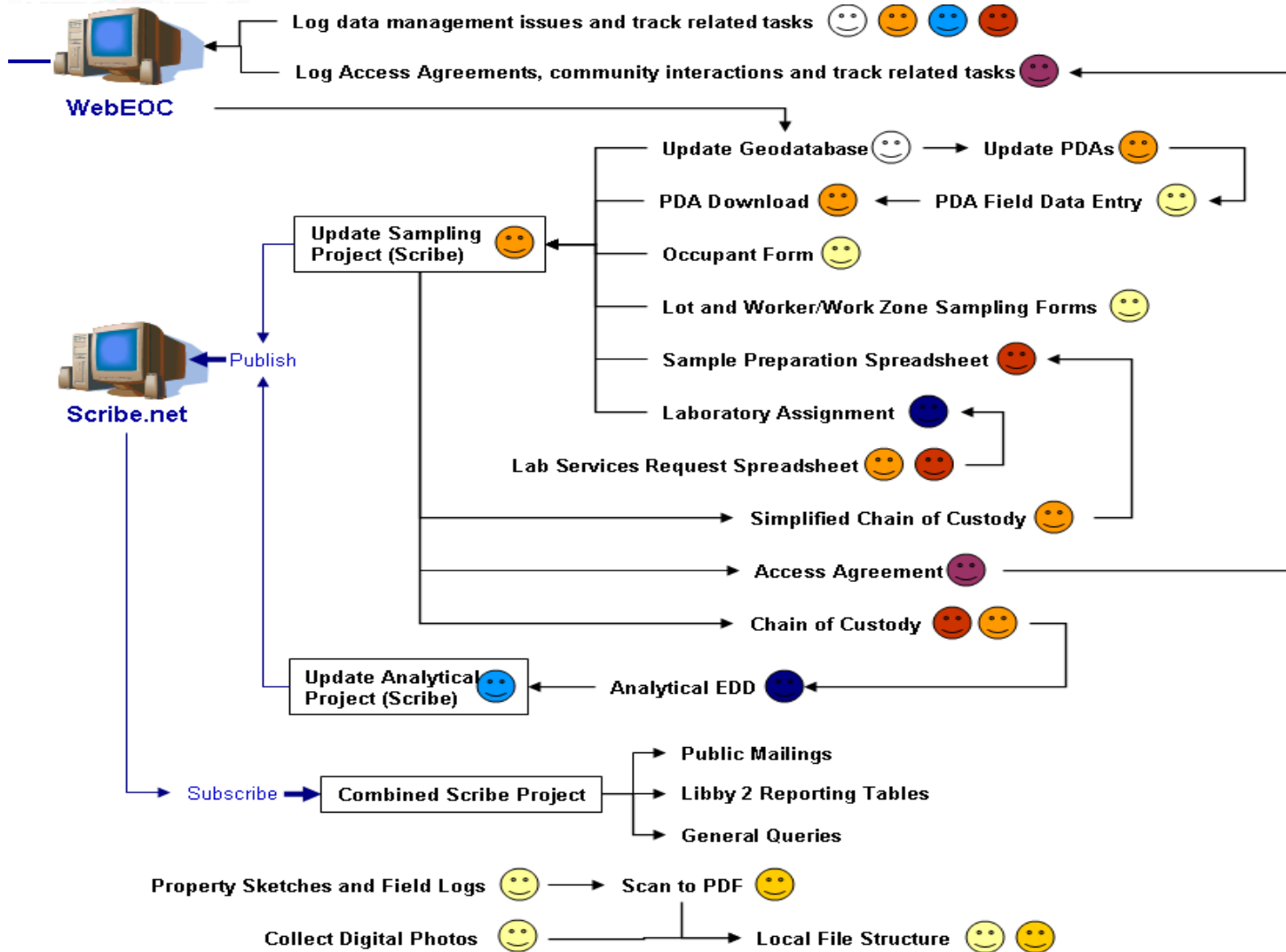


XRF Soil Monitoring





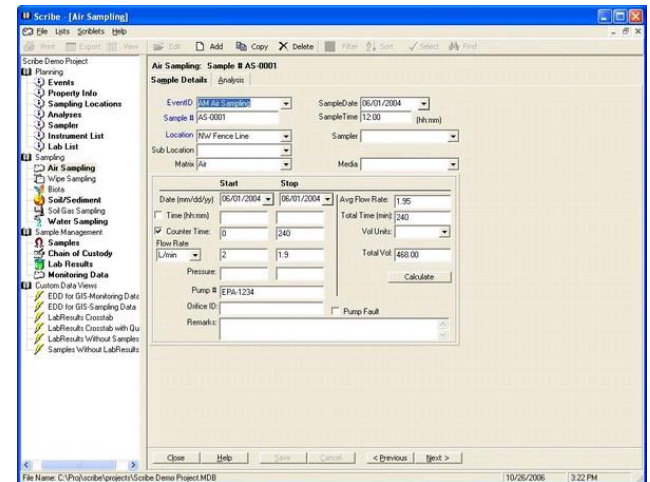
# to the Complex...



Position
☹️ GIS Coordinator
☹️ Alternate GIS Coordinator
😊 Field Teams (Coordinator)
😊 Field Teams (Alternate Coordinator)
😄 Sampling Coordinator
😄 Alternate Sampling Coordinator
😡 Sample Prep Teams (Coordinator)
😡 Sample Prep Teams (Alternate Coordinator)
😞 Analytical Coordinator
😞 Alternate Analytical Coordinator
😡 Community Involvement Coordinator
😡 Alternate Community Interaction Coordinator
😡 VOLPE Sample Broker
MT-DEQ Project Officer
EPA Team Leader
EPA Remedial Project Manager
Technical Support Coordinator
Data Standards Coordinator



# Data Collection Tools





# Data Elements

---

- Every piece of information you are capturing
  - May be more than you realize
- Information about a sample
  - Location ID
  - Matrix
  - Event
  - Depth
  - Etc.



# Data Quality Objectives

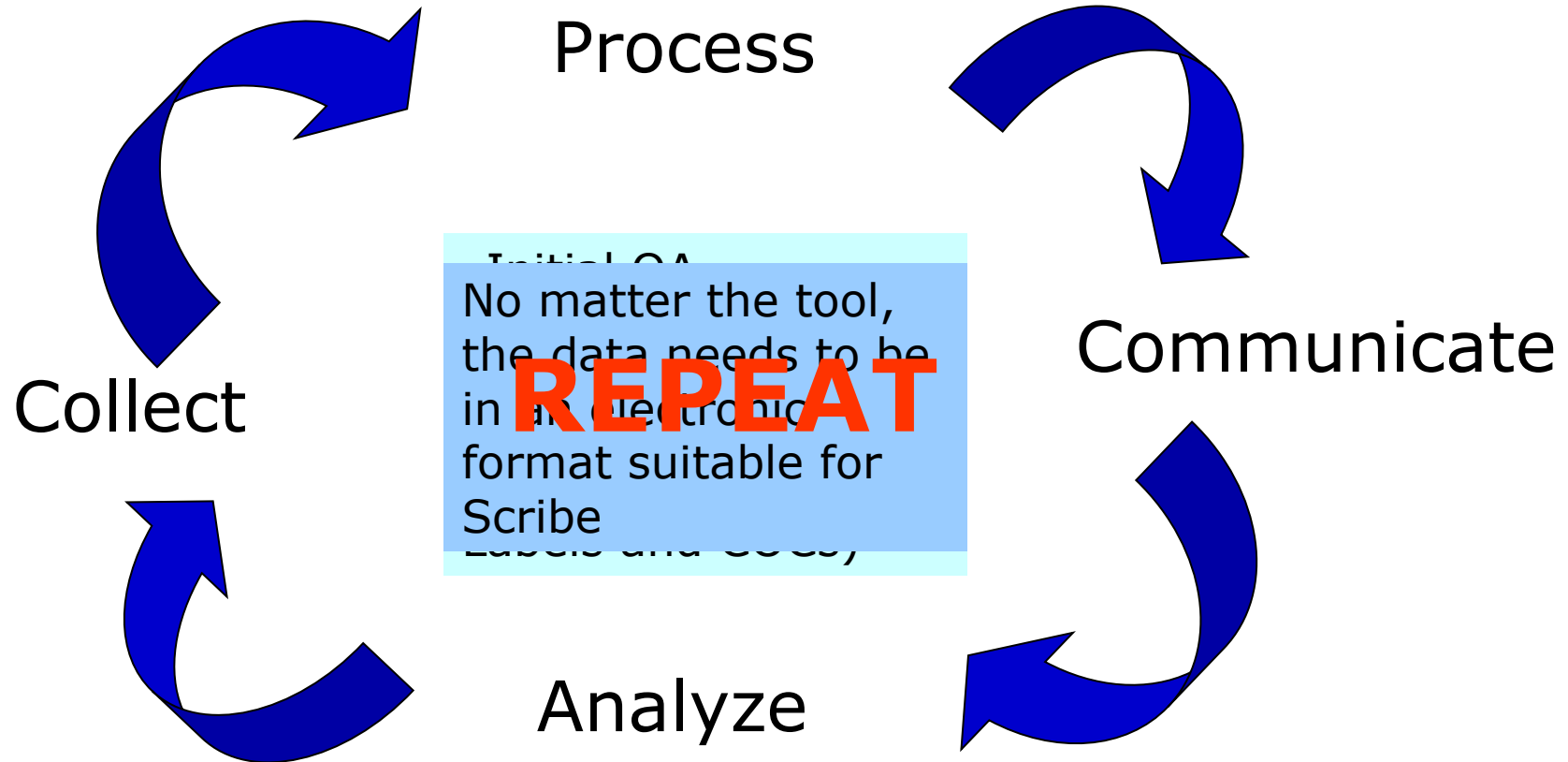
---

- ❑ aka “ Reporting Requirements”
- ❑ Make sure the information you are capturing can satisfy required reports and possibly future requests
- ❑ May force you to re-evaluate your data elements and possibly your collection tools



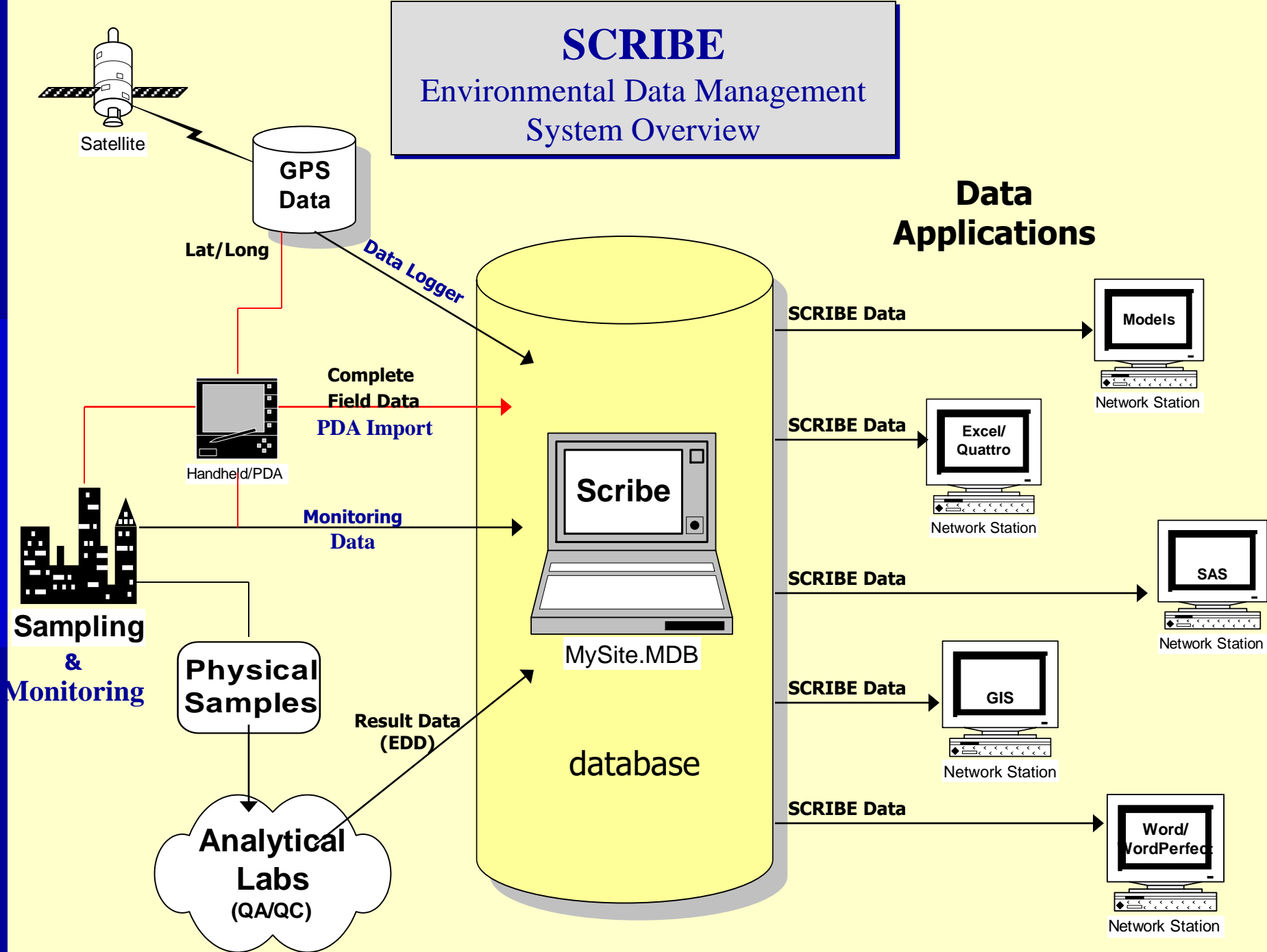


# Then the actual work begins...



# SCRIBE

## Environmental Data Management System Overview

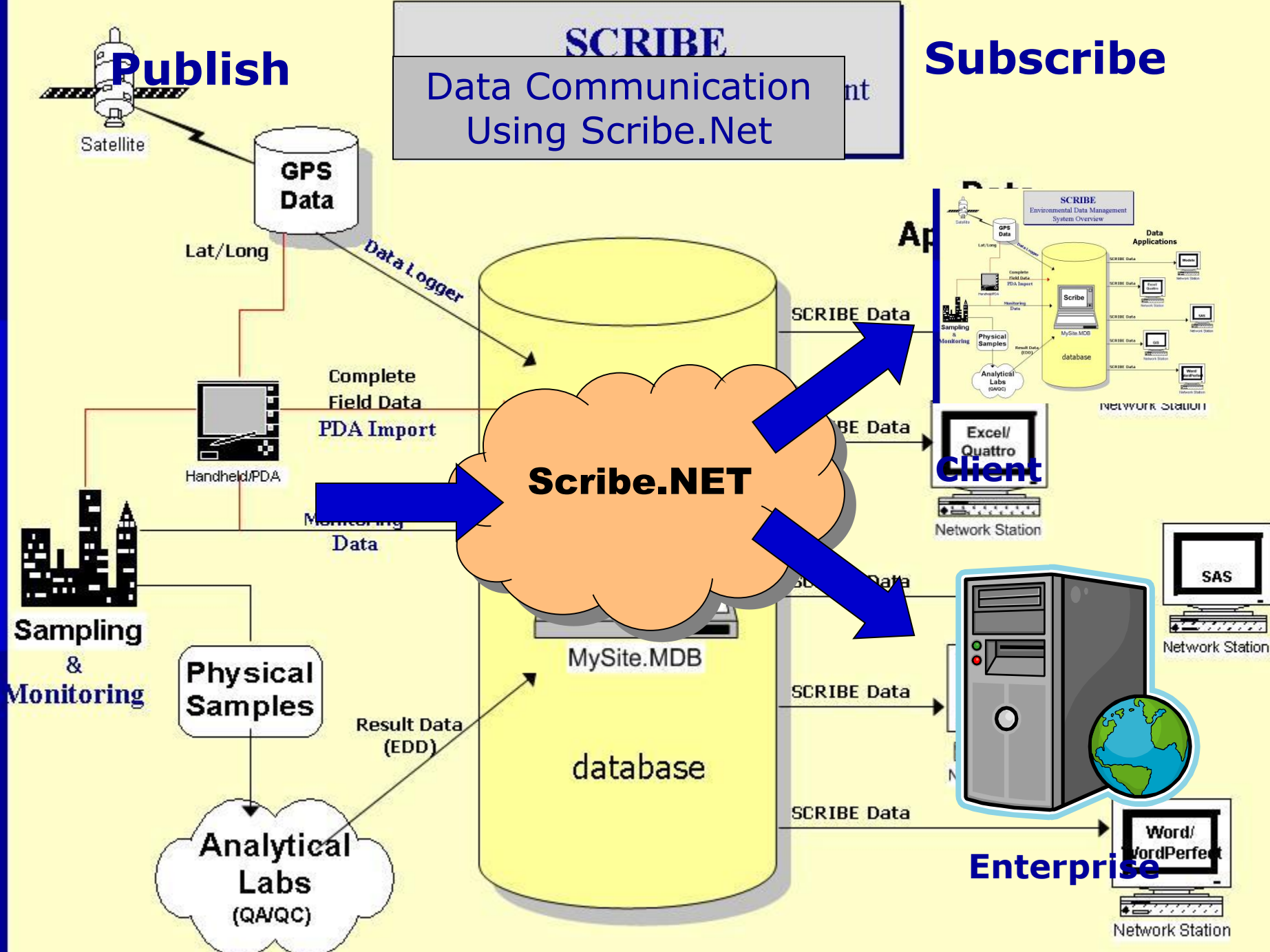


# SCRIBE

Data Communication  
Using Scribe.Net

# Subscribe

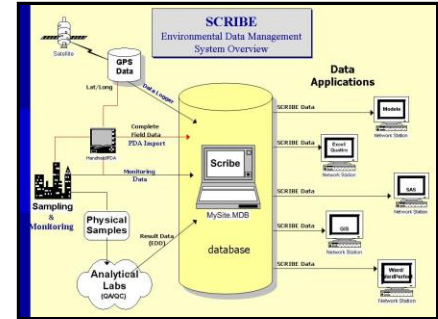
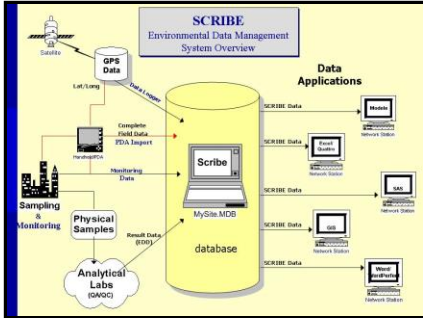
# Publish



# Publish

Multiple-Project  
Publication Model

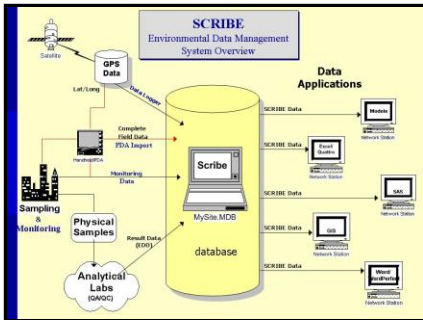
# Subscribe



# Sampling

# Scribe.NET

# Client



# Analytical

# Enterprise



# Data Integration

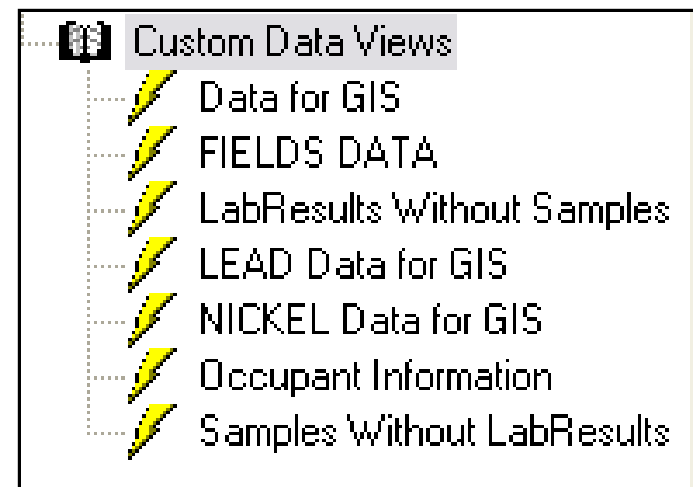
---

- ❑ Back-end Microsoft Access Database
- ❑ Scribe can import a variety of data
  - ADR
  - Forms II Lite
  - SEDD
  - NARAC
  - Any .CSV or spreadsheet format
- ❑ Scribe can provide data to other resources
  - ArcGIS
  - Oracle Database Applications
  - Word Processing and Spreadsheets



# Queries

- ❑ Custom Data Views are site-specific queries added to the database
- ❑ Accessible with one click via the user interface
- ❑ Useful when a specific question is asked repeatedly of the data
- ❑ Example: Results above an action level





# Import Scripts

---

- Mappings of imported data can be saved within the database
  - Eliminate the need to re-map data with subsequent data from the same source
  - Saves time and provides consistency
- Useful for documentation purposes especially when bringing in historical data

Script Name:  
NADES IMPORT



# Layouts

---

- ❑ Sections of Scribe that are not used can be turned off to streamline the presentation of the data
- ❑ Each section of Scribe can accommodate many different layouts
- ❑ Allows users to re-caption, arrange and display fields according to their needs
- ❑ Very useful for COCs and delivering data to other systems





# Project Templates

---

- ❑ Customizations in a previous Scribe project i.e. layouts, queries, and import scripts can be brought forward into new projects
- ❑ Custom templates can be developed based on site type that will automatically incorporate layouts, import scripts, queries and picklist values
  - SVI Template
  - Groundwater Template
  - Activity-Based Sampling for Asbestos Template



# Division of Labor

---

- Many times work on a site is broken up by type
  - Field crews deal with samples
  - Analytical information is delivered to a QA group
- Scribe.NET allows you to maintain multiple projects for the same site and then join that data in a master subscription
- A good way to accommodate multiple contractors or roles on a large project
- Example: WTC Residential Survey



# Site Transition

---

- ❑ Scribe is a known data format that the Removal program is required to use
- ❑ As sites transition to from removal to remedial, make sure you get the complete Scribe data package in addition to hard copy reports and the site file
- ❑ Build on what was done instead of starting from scratch



# Deliverable

---

- Require Scribe as a project deliverable in addition to a report
- Good compromise when dealing with an established site that already has a data system in place
  - They can continue managing their data but the data deliverable to EPA is consistent and uniform
- Allows EPA to implement systems to combine Scribe data from many sites for other uses (GIS, regional databases, etc.)



# Review

---

- ❑ Flexibility and Functionality
- ❑ Standardization
- ❑ Data Integration
- ❑ Customizable
  - Queries
  - Import Scripts
  - Layouts
  - Project Templates
- ❑ Communication
- ❑ Deliverable



# More information

---

- Scribe website
  - <http://response.epa.gov/Scribe>
- Scribe.NET website
  - [http://response.epa.gov/scribe\\_net](http://response.epa.gov/scribe_net)
- ERT Software Support
  - [ertsupport@epa.gov](mailto:ertsupport@epa.gov)
  - 24/7 Hotline Number: 1-800-999-6990